

4384 6th CONDITIONED
 UPPER LEVEL FLOOR PLAN
 SCALE: 1/4"=1'-0"
 NORTH

NO.	DATE	DESCRIPTION
1		ISSUE FOR PERMIT
2		ISSUE FOR CONSTRUCTION
3		ISSUE FOR OCCUPANCY
4		ISSUE FOR AS-BUILT
5		ISSUE FOR FINAL REVIEW
6		ISSUE FOR ARCHIVE
7		ISSUE FOR CLOSURE
8		ISSUE FOR DEMOLITION
9		ISSUE FOR RECONSTRUCTION
10		ISSUE FOR RENOVATION
11		ISSUE FOR RESTORATION
12		ISSUE FOR REPAIR
13		ISSUE FOR REPLACEMENT
14		ISSUE FOR REUSE
15		ISSUE FOR RECYCLING
16		ISSUE FOR REPAIR AND MAINTENANCE
17		ISSUE FOR REPAIR AND MAINTENANCE
18		ISSUE FOR REPAIR AND MAINTENANCE
19		ISSUE FOR REPAIR AND MAINTENANCE
20		ISSUE FOR REPAIR AND MAINTENANCE
21		ISSUE FOR REPAIR AND MAINTENANCE
22		ISSUE FOR REPAIR AND MAINTENANCE
23		ISSUE FOR REPAIR AND MAINTENANCE
24		ISSUE FOR REPAIR AND MAINTENANCE
25		ISSUE FOR REPAIR AND MAINTENANCE
26		ISSUE FOR REPAIR AND MAINTENANCE
27		ISSUE FOR REPAIR AND MAINTENANCE
28		ISSUE FOR REPAIR AND MAINTENANCE
29		ISSUE FOR REPAIR AND MAINTENANCE
30		ISSUE FOR REPAIR AND MAINTENANCE
31		ISSUE FOR REPAIR AND MAINTENANCE
32		ISSUE FOR REPAIR AND MAINTENANCE
33		ISSUE FOR REPAIR AND MAINTENANCE
34		ISSUE FOR REPAIR AND MAINTENANCE
35		ISSUE FOR REPAIR AND MAINTENANCE
36		ISSUE FOR REPAIR AND MAINTENANCE
37		ISSUE FOR REPAIR AND MAINTENANCE
38		ISSUE FOR REPAIR AND MAINTENANCE
39		ISSUE FOR REPAIR AND MAINTENANCE
40		ISSUE FOR REPAIR AND MAINTENANCE
41		ISSUE FOR REPAIR AND MAINTENANCE
42		ISSUE FOR REPAIR AND MAINTENANCE
43		ISSUE FOR REPAIR AND MAINTENANCE
44		ISSUE FOR REPAIR AND MAINTENANCE
45		ISSUE FOR REPAIR AND MAINTENANCE
46		ISSUE FOR REPAIR AND MAINTENANCE
47		ISSUE FOR REPAIR AND MAINTENANCE
48		ISSUE FOR REPAIR AND MAINTENANCE
49		ISSUE FOR REPAIR AND MAINTENANCE
50		ISSUE FOR REPAIR AND MAINTENANCE

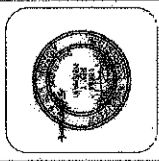


THE STOCKMEN'S BANK
 CORPORATE OFFICE ADDITION
 3825 STOCKTON HILL ROAD
 KINGMAN, ARIZONA

UPPER LEVEL FLOOR PLAN

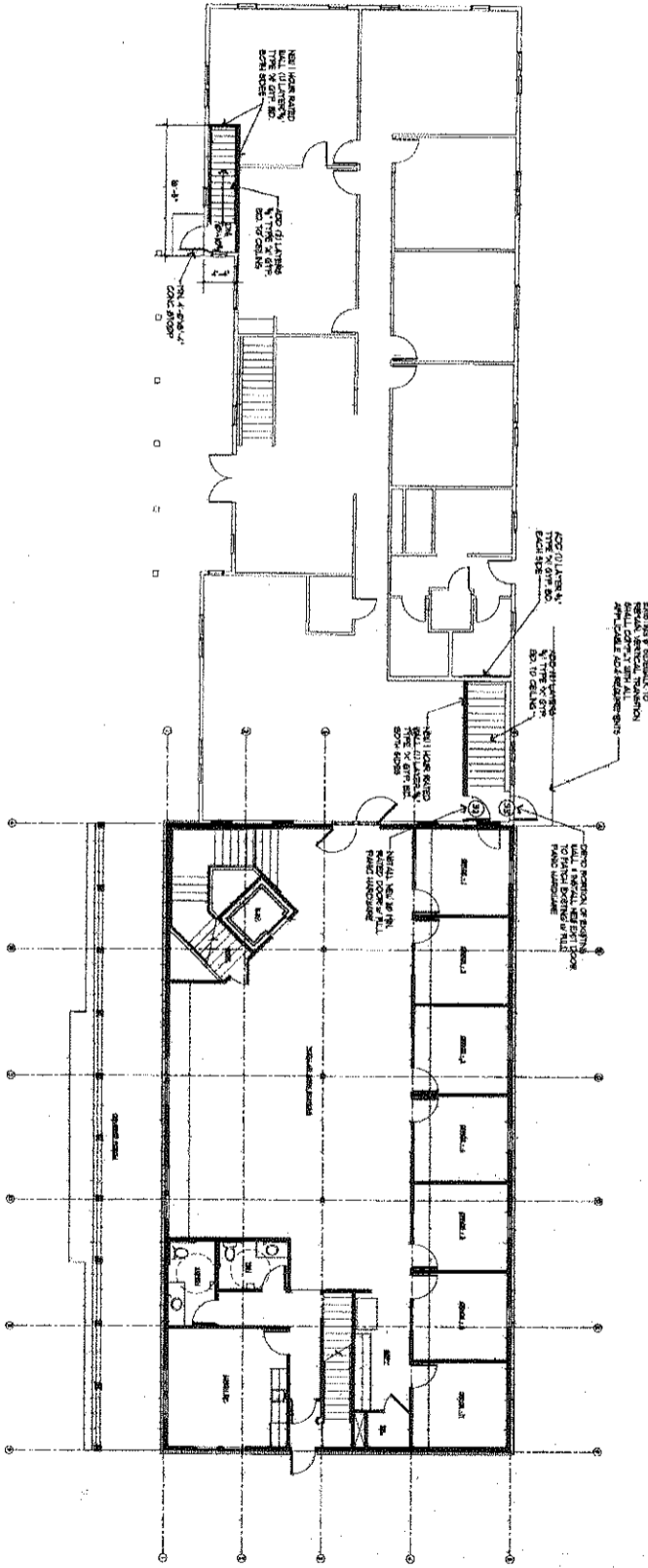
OPPINIS & ANDERSON ARCHITECTS
 1100 N. BEEHIVE HIGHWAY PAYSON, AZ 85941 520-474-3630 FAX 474-4626

© 2005, All rights reserved by Oppinis & Anderson Architects



DATE: 1/11/07
 DRAWN BY: JAW
 CHECKED BY: JAW
 SCALE: 1/4"=1'-0"

SEE LISTED ASSUMPTIONS, ETC.
 WALLS: GA FILE NO. 10-35-4
 CEILING: GA FILE NO. 10-35-4



OVERALL MAIN LEVEL FLOOR PLAN
 SCALE: 1/4" = 1'-0"



<p>A1.4</p>	<p>THE STOCKMEN'S BANK CORPORATE OFFICE ADDITION 3825 STOCKTON HILL ROAD KINGMAN, ARIZONA</p>	<p>SPRAGINS & HINSHAW ARCHITECTS 1100 N. BEELINE HIGHWAY PAYSON, AZ 85541 520-474-3630 FAX 474-4825</p>		<p>JOB NO. DATE DESIGNED BY REVISIONS DRAWN BY CHECKED BY DATE</p>
--------------------	---	---	--	--