

Executive Summary

Bullhead City

Narrative: The total parcel is comprised of approximately .70 acres and is located at 1160 Highway 95. This property is comprised of six lots and all six lots are zoned C-2. The uniqueness of the subject property is the CORNER LOT AT Highway 95 and Second Street. The property is surrounded by commercial developments and is located in the heart of Bullhead City by the new Sam's Club and Home Depot. Property has frontage on Highway 95 and Lee Avenue (two lots on Highway 95 and four lots on Lee Avenue). Please call listing office for more details.

Address: 1160 Highway 95, 441 & 447 Lee Avenue
Bullhead City, AZ 86429

Parcel #: 214-04-008, 009 & 010

Property:	C-2 Commercial	.70 Acres
	Square Feet	30,492
	Lot Dimension Approximate	100X100, 100X200
	Total Gross Acres	± .70 Acres

Price:	\$ 599,000.00
Per Square Foot	\$ 19.64
Total Price Terms	\$ 599,000.00

ELIO S. KHALIFE
FIRST AMERICAN INVESTMENT, LLC
3200 Lakeside Village Drive, Suite 201
Prescott, AZ. 86301
Phone (928) 541-1557
Fax: (928) 541-1561
www.firstamericaninvestment.com

The above information was delivered from a source deemed reliable. We have no reason to doubt the accuracy, but make no representation or warranties, expressed or implied to the accuracy of this information.

SEC. 1 Por lot 4 TN 20 N Rg. 22 W

BULLHEAD CITY
UNIT No 5 REC MARCH 16, 1946

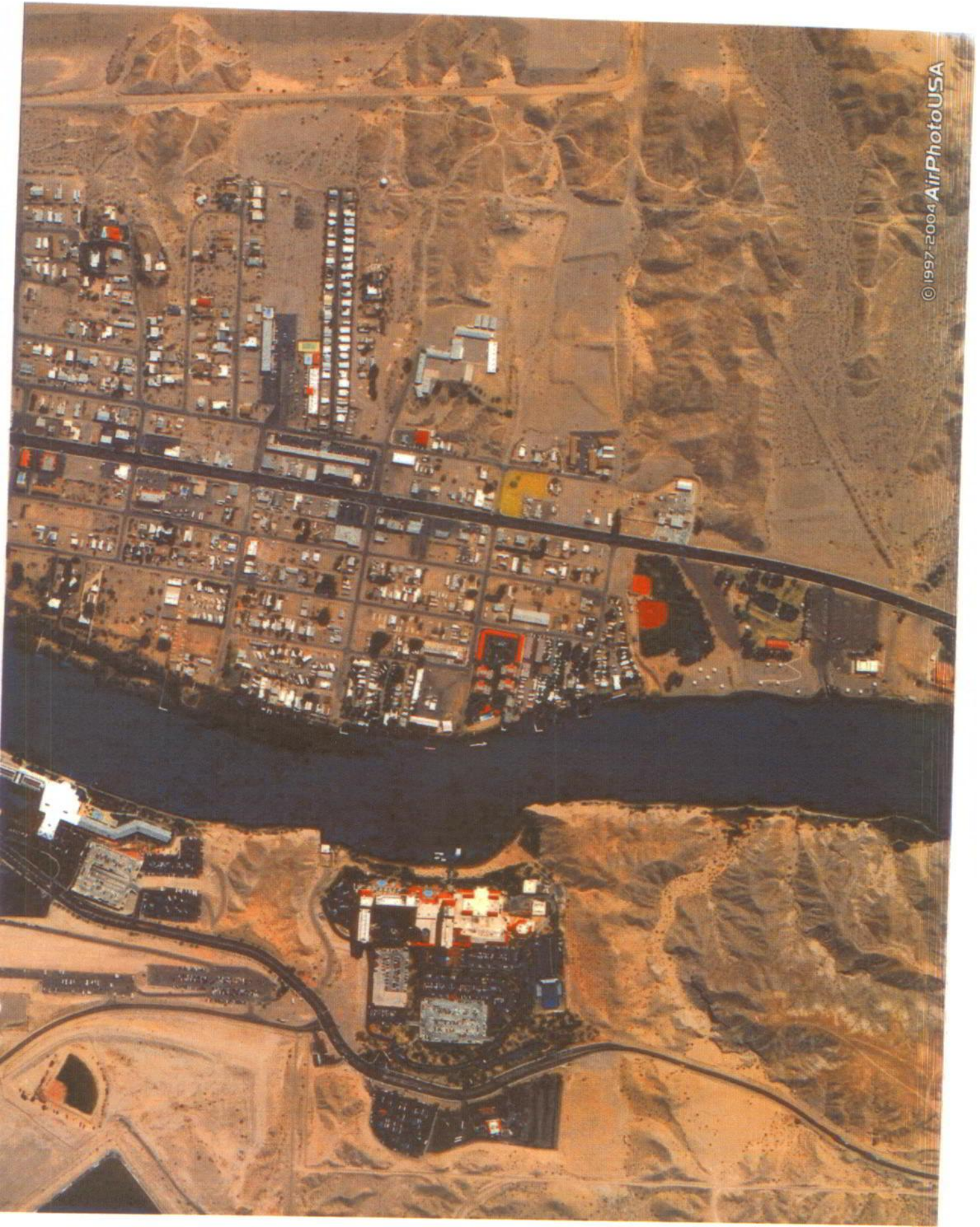
BOOK 214
MAP 04
1 OF 2
Cada 15555



SCALE 1" = 100'

20N 22W 1
July 01, 1991

MOHAVE COUNTY ASSESSOR'S MAP



© 1997-2004 AirPhotoUSA