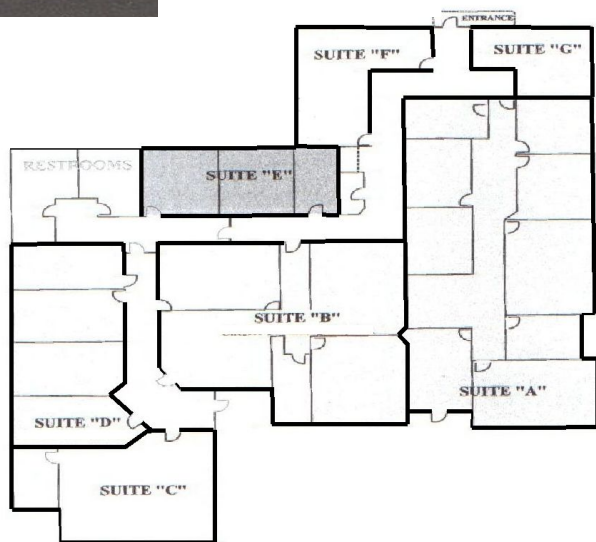


AVAILABLE FOR LEASE OR SALE PRESCOTT, AZ - PLAZA WEST OFFICE PARK

**Gurley Street and Plaza West Drive
Prescott, AZ - Yavapai County**



**6,758 sq. ft.
All or Part**



- Professional Office Space.
- Beautiful landscaped setting 3-5 minutes from downtown.

Demographics		
	5 mile	10 miles
2010 Population	43,587	62,511
Avg. HH income	\$49,614	66,319

FIRST AMERICAN INVESTMENT, LLC
Ph 928-541-1557 ~ Fax 928-541-1561
www.firstamericaninvestment.com

Elio S. Khalife ~ Designated Broker ~ E-mail: eliokhalife@msn.com