

AVAILABLE PAD SITES FOR SALE STOCKTON AIRWAY CENTER KINGMAN, AZ

**TEN FINISHED PADS
WEST OF STOCKTON HILL RD BETWEEN
AIRWAY AVE. & SYCAMORE AVE.
Join Walgreens, McDonalds, KRMC
Smith's Food & Drugs and Super Wal-Mart.**



www.FirstAmericanInvestment.com

**FIRST AMERICAN
INVESTMENT, LLC**

Tel: (928) 541-1557 • Fax: (928) 541-1561

Elio S. Khalife ~ Designated Broker
E-mail: eliokhalife@msn.com

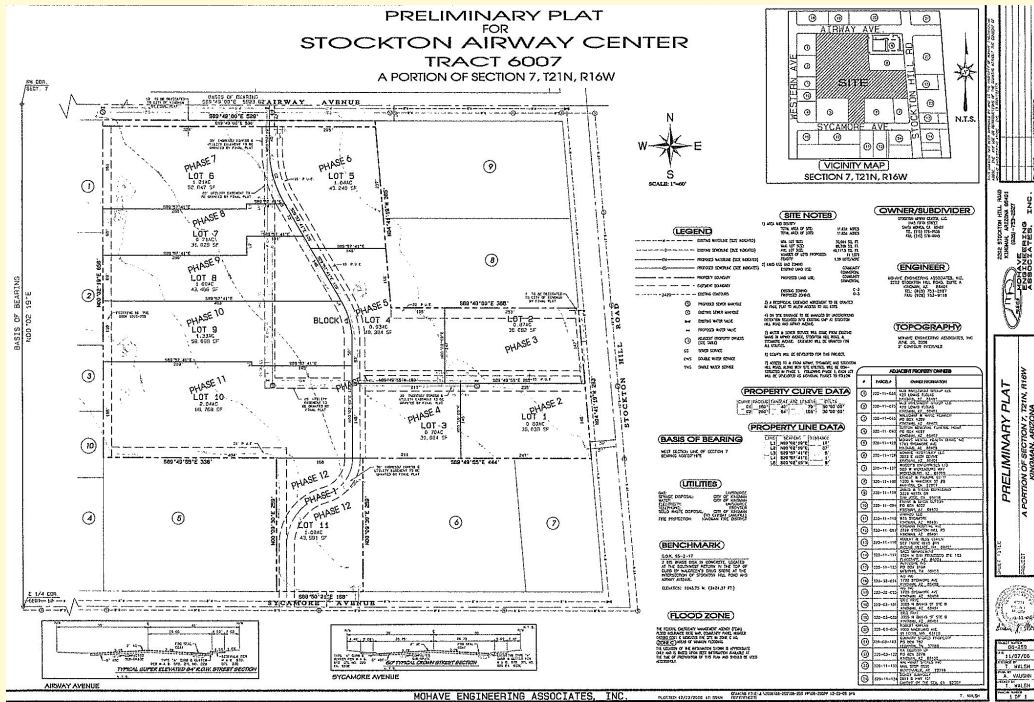
HW Properties, LLC

Tel: (928) 753-6400 • Fax: (928) 753-7773

Dave Hollingsworth
E-mail: landman@citlink.net

First American Investment, LLC HW Properties, LLC

AVAILABLE PAD SITES FOR SALE STOCKTON AIRWAY CENTER KINGMAN, AZ



Lot 1	.80 gross acres	\$762,000.00	Lot 7	.71 gross acres	\$444,000.00
Lot 3	.70 gross acres	\$485,000.00	Lot 8	1.00 gross acres	\$608,000.00
Lot 4	.93 gross acres	\$613,000.00	Lot 9	1.33 gross acres	\$830,000.00
Lot 5	1.04 gross acres	\$698,000.00	Lot 10	2.04 gross acres	\$1,274,000.00
Lot 6	1.21 gross acres	\$894,000.00	Lot 11	.95 gross acres	\$489,000.00

**FIRST AMERICAN
INVESTMENT, LLC**

Tel: (928) 541-1557 • Fax: (928) 541-1561

Elio S. Khalife ~ Designated Broker
E-mail: eliokhalife@msn.com

HW Properties, LLC

Tel: (928) 753-6400 • Fax: (928) 753-7773

Dave Hollingsworth
E-mail: landman@citlink.net